

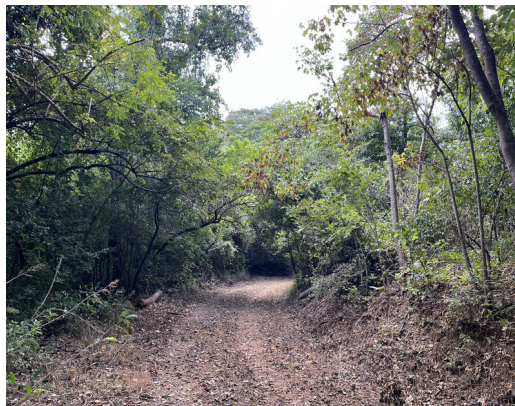
# 12.35 Acres Development Property 10 min from Tamarindo

## \$2,103,200

ID: 20869

📍 Tamarindo, Guanacaste

Property Type: Land • Size: 52,580 SQ M •



- Status: Active/Published
- Close To Schools
- Development Farm
- Acreage
- Close To Shops
- Close To Golf
- Close To Transport

## Property Description

Welcome to Finca Medaglia, a prime development land opportunity ideally suited for an ecological mixed-use complex. Situated in one of Costa Rica's top destinations, this property offers a valuable investment opportunity, conveniently located just 10 minutes from Tamarindo, 20 minutes from Flamingo & Conchal, and 50 minutes from the Guanacaste Airport (LIR). With its mixed-use zoning, Finca Medaglia spans over 5 hectares (12.35 acres) and boasts 820 ft of main road frontage next to Maxi Pali. This makes it an ideal location for commercial businesses, residences, restaurants, green spaces with nature trails, and outdoor markets. The property also offers endless development opportunities with its wide forest cover and no adjoining construction. The property's proximity to popular beach communities such as Tamarindo, Playa Grande, Avellanas, Flamingo, and Conchal adds to its appeal. These areas attract both tourists and full-time residents, making it a desirable location for investment.

## Additional

- ID 20869
- Active/Published
- For Sale
- Land
- \$2,103,200

Costa Rica Direct: +506 2656 0856

US Number: +1 814 500 3379

80 m Oeste de la Iglesia Catolica, Guanacaste, Samara, 50206

